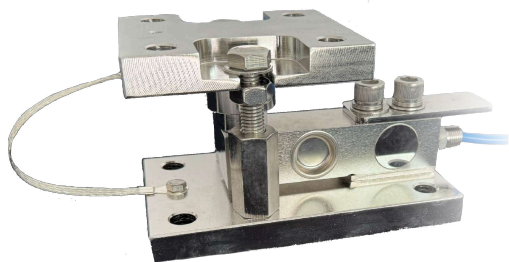


# HSQB-M

## Mounting Module



### HSQB-M

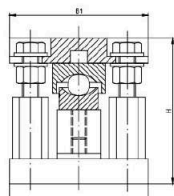
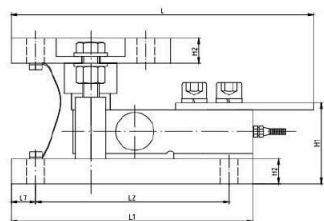
#### Product Features:

- High precision, high reliability, and safety
- 360-degree all-round limit protection
- Anti-tilt protection
- Suitable for both dynamic and static applications
- Overload protection
- Compatible with HSQB loadcell

### Specification

Rated load (E <sub>max</sub> )	0.25~2.5t, 3~5t, 7.5~10t	Insulation resistance	≥5000MΩ
Sensitivity	3.0±0.006 % mV/V	Operating Temp Range	(-30 ~ +70)°C
Combined error	±0.02 % F.S; ±0.03 % F.S	Safe load limit	150 % F.S
Creep/30min	±0.02 % F.S/30min	Ultimate overload	180 % F.S
Zero balance	±1 % F.S	Recommend excitation	10 ~ 12V DC
TCO	±0.02 % F.S/10°C	Max excitation	15V DC
TC SPAN	±0.02 % F.S/10°C	Protection Class	IP67 (0.25~0.75t); IP68 (1~10t)
Input resistance	400±20Ω	Material	Alloy steel Stainless steel
Output resistance	352±3Ω	Cable	Length: 5m Diameter: ø5mm

### Main Dimensions



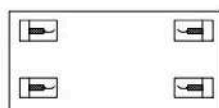
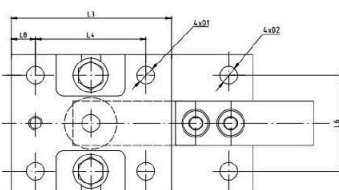
(t) Rated load	H	H1	H2	B1	B2	D1	D2	L	L1	L2	L3	L4	L5	L6	L7	L8
0.1~2.5	106	58	18	100	100	13	13	210	175	140	116	80	70	70	17.5	18
3~5	135	69.1	23	150	150	17	17	270	235	200	150	100	90	90	15	25
7.5~10	186.3	91.3	28	180	180	26	26	345.2	310	250	210.4	150.4	110	110	30	30



Radial Install



Cutting Install



Rectangle Install

