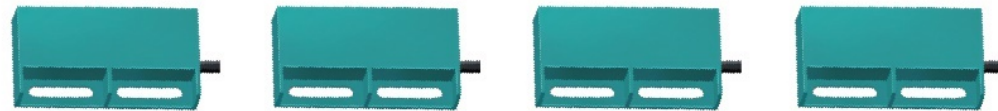
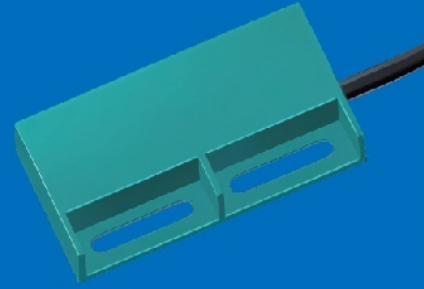


# Rectangle magnetic reed sensor RMS68-PR

## Rectangle magnetic reed sensor

### Product Characteristics

- Can be tested in a non-contact manner, so there will be no wear or damage to the tested object
- Adopting contactless output mode, thus extending service life
- Unlike light detection, it is suitable for use in environments such as water and oil
- Almost unaffected by stains, oil, water, etc. of the tested object during testing
- Compared to contact switches, it can achieve high-speed response



### Product Function

- Contactless induction operation mode, without mechanical movement, directly installed in the original overload switch position without changing the elevator structure;
- Adopting high-strength induction magnets to maximize the system's anti-interference ability;
- Electrical performance meets the "IEC" standard;
- Accurate positioning, small size, and convenient installation and debugging.

Model	RMS68-PR-A80	RMS68-PR-A60	RMS68-PR-A10	RMS68-PR-A20
-------	--------------	--------------	--------------	--------------

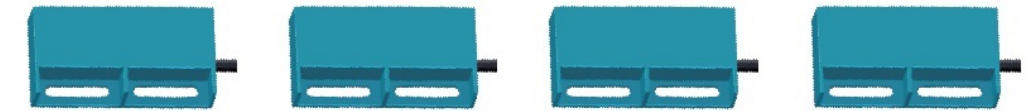
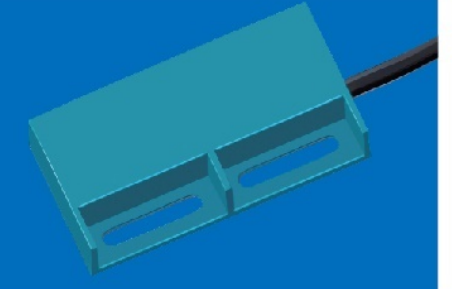
Standards	IEC/EN 60947-5-2	IEC/EN 60947-5-2	IEC/EN 60947-5-2	IEC/EN 60947-5-2
Enclosure	Glass-fibre PA	Glass-fibre PA	Glass-fibre PA	Glass-fibre PA
Operating principle	Magnetic	Magnetic	Magnetic	Magnetic
Contact variants	NO	NO	NO	NO
Switching voltage	Max.250VAC	Max.140VAC	Max.230VAC	Max.150VAC
Switching current	Max.1.3A	Max.1A	Max.0.5A	Max.1A
Switching capacity	Max.80VA/W	Max.60VA/W	Max.10VA/W	Max.20VA/W
Dielectric strength	800V	250V	400V	200V
Switching speed	Max.3.5ms	Max.4ms	Max.2ms	Max.2ms
Switching frequency	<500Hz	<500Hz	<500Hz	<500Hz
Switching time"closing"	0.2ms	0.15ms	0.1ms	0.02ms
Switching time"opening"	3.5ms	4ms	2ms	2ms
Bounce time	0.5ms	0.5ms	0.5ms	0.6ms
Ambient temperature	-20~+60℃	-20~+60℃	-20~+60℃	-20~+60℃
Mechanical life	Min.10 <sup>8</sup>	Min.10 <sup>8</sup>	Min.10 <sup>8</sup>	Min.10 <sup>8</sup>
Electrical life	1million-1 billion	1million-1 billion	1million-1 billion	1million-1 billion
Repeatability	± 0.25mm	± 0.25mm	± 0.25mm	± 0.25mm
Protection class	IP67-EN60529	IP67-EN60529	IP67-EN60529	IP67-EN60529
Dimensions	68 × 35 × 15mm	68 × 35 × 15mm	68 × 35 × 15mm	68 × 35 × 15mm
Cable length	2m(standard)	2m(standard)	2m(standard)	2m(standard)

# Rectangle magnetic reed sensor RMS68-PR

## Rectangle magnetic reed sensor

### Product Characteristics

- Can be tested in a non-contact manner, so there will be no wear or damage to the tested object
- Adopting contactless output mode, thus extending service life
- Unlike light detection, it is suitable for use in environments such as water and oil
- Almost unaffected by stains, oil, water, etc. of the tested object during testing
- Compared to contact switches, it can achieve high-speed response



### Product Function

- Contactless induction operation mode, without mechanical movement, directly installed in the original overload switch position without changing the elevator structure;
- Adopting high-strength induction magnets to maximize the system's anti-interference ability;
- Electrical performance meets the "IEC" standard;
- Accurate positioning, small size, and convenient installation and debugging.

Model	RMS68-PR-C80	RMS68-PR-C60	RMS68-PR-C10	RMS68-PR-B80	RMS68-PR-B60
-------	--------------	--------------	--------------	--------------	--------------

Standards	IEC/EN60947-5-2	IEC/EN60947-5-2	IEC/EN60947-5-2	IEC/EN60947-5-2	IEC/EN60947-5-2
Enclosure	Glass-fibre PA	Glass-fibre PA	Glass-fibre PA	Glass-fibre PA	Glass-fibre PA
Operating principle	Magnetic	Magnetic	Magnetic	Magnetic	Magnetic
Contact variants	NC	NC	NC	BI	BI
Switching voltage	Max.230VAC	Max.140VAC	Max.230VAC	Max.230VAC	Max.140VAC
Switching current	Max.1A	Max.1A	Max.0.5A	Max.1A	Max.1A
Switching capacity	Max.80VA/W	Max.60VA/W	Max.10VA/W	Max.80VA/W	Max.60VA/W
Dielectric strength	400V	250V	400V	400V	250V
Switching speed	Max.4ms	Max.4ms	Max.2ms	Max.4ms	Max.4ms
Switching frequency	<500Hz	<500Hz	<500Hz	<500Hz	<500Hz
Switching time"closing"	0.1ms	0.15ms	0.1ms	0.1ms	0.15ms
Switching time"opening"	4ms	4ms	2ms	4ms	4ms
Bounce time	0.5ms	0.5ms	0.5ms	0.5ms	0.5ms
Ambient temperature	-20~+60℃	-20~+60℃	-20~+60℃	-20~+60℃	-20~+60℃
Mechanical life	Min.10 <sup>8</sup>	Min.10 <sup>8</sup>	Min.10 <sup>8</sup>	Min.10 <sup>8</sup>	Min.10 <sup>8</sup>
Electrical life	1million-1 billion	1million-1 billion	1million-1 billion	1million-1 billion	1million-1 billion
Repeatability	± 0.25mm	± 0.25mm	± 0.25mm	± 0.25mm	± 0.25mm
Protection class	IP67-EN60529	IP67-EN60529	IP67-EN60529	IP67-EN60529	IP67-EN60529
Dimensions	68 × 35 × 15mm	68 × 35 × 15mm	68 × 35 × 15mm	68 × 35 × 15mm	68 × 35 × 15mm
Cable length	2m(standard)	2m(standard)	2m(standard)	2m(standard)	2m(standard)